



Facilities at a Glance

- Main Hall Capacity: 120 seated, 240 standing
- Dimensions: 19.5m x 9.75m, Height: 5.5m
- Badminton court lined
- Stage with dressing rooms and toilets
- Stage lighting (by arrangement)

Additional Spaces

- Small meeting room (8–10 people)
- Fully fitted kitchen:
- Full-sized cooker & oven
- Microwave
- Fridge
- Hot water boiler
- Crockery

Audio/Visual Equipment

- Sound system
- Radio microphone
- Projector & screen
- Hearing loop (for hard of hearing)
- Stage lighting (by arrangement)

Furniture

- 120 chairs
- 18 large tables
- 12 card tables
- Chair covers:
- 100 white
- 50 black
- Chair bows in peach, Cadbury purple, and hessian
- Red carpet for aisle
- 4 uplighters (inventory confirmation pending)

Toilets

- Men's & women's restrooms
- Disabled-access toilet
- Baby changing facilities

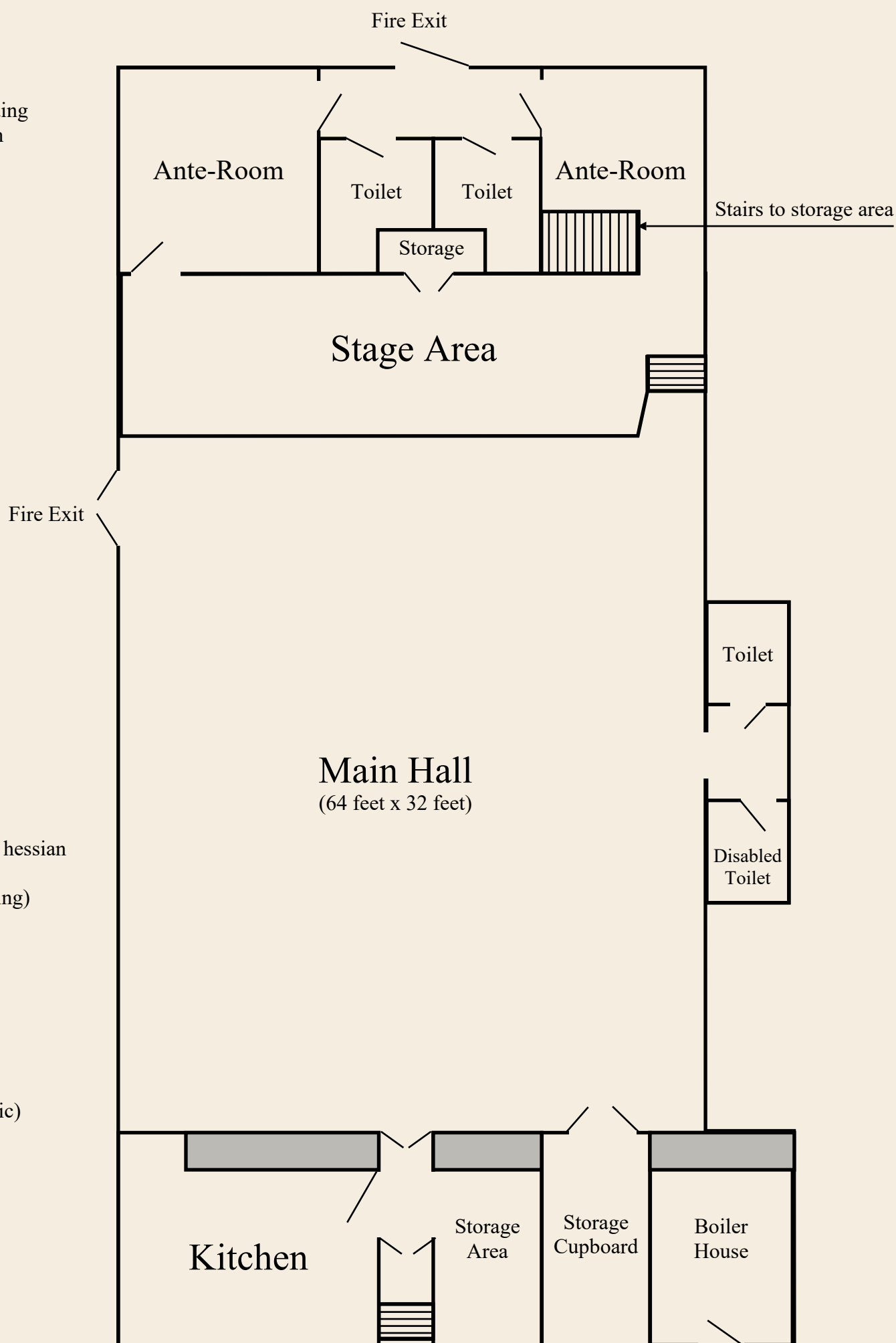
Licenses & Accessibility

- PRS Music License (for pre-recorded music)
- Public Entertainment License
- Public Liability Insurance
- Full Disabled Access

Contact & Booking

Have questions or want to check availability?

Contact: Rosemary Pittendrigh,
email: rosemary.pittendrigh@outlook.com



Floor Plan for Port Erroll Public Hall